



Liverpool City Region Long Term Rail Strategy

Cllr Liam Robinson
Chair, Merseytravel
WTUA, 21st July, 2014.





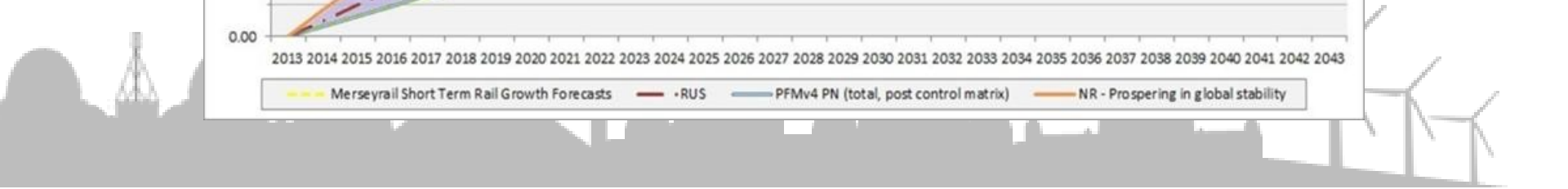
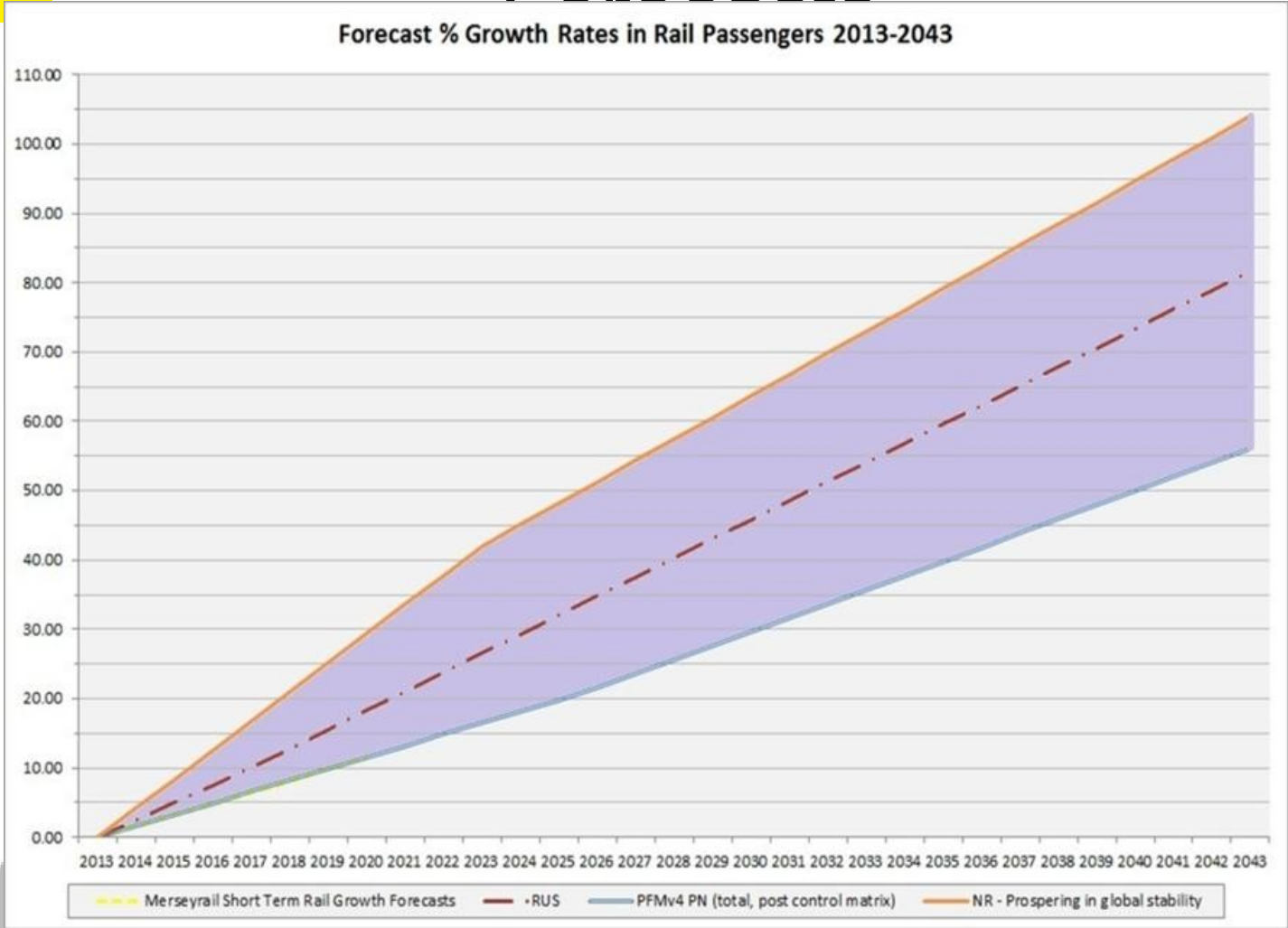
Rail: Vital to LCR

- One of the most Successful and well used networks in the Country.
- Vital to Economic Growth
- Vital to keep up with demand.



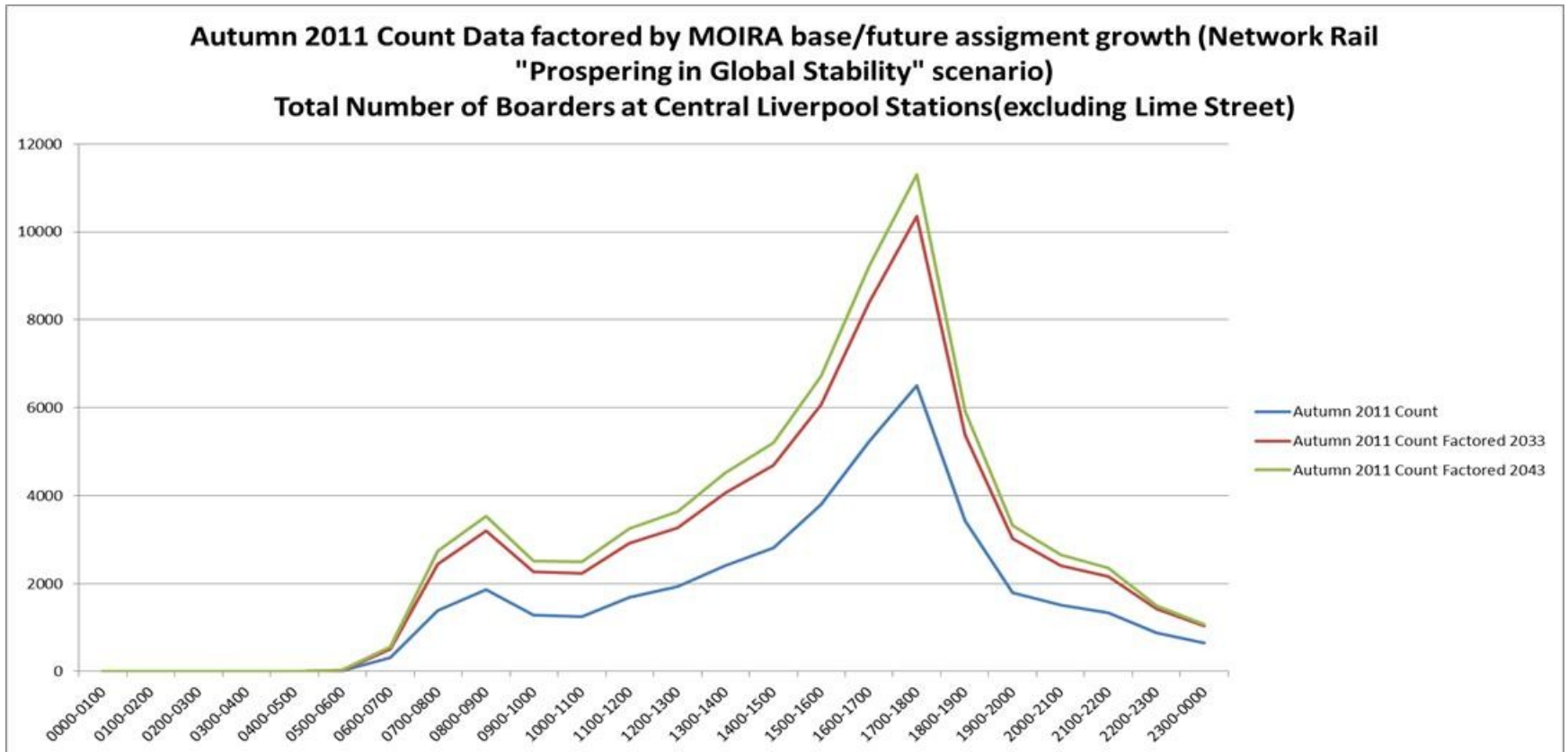


Rail Passenger Growth Forecasts



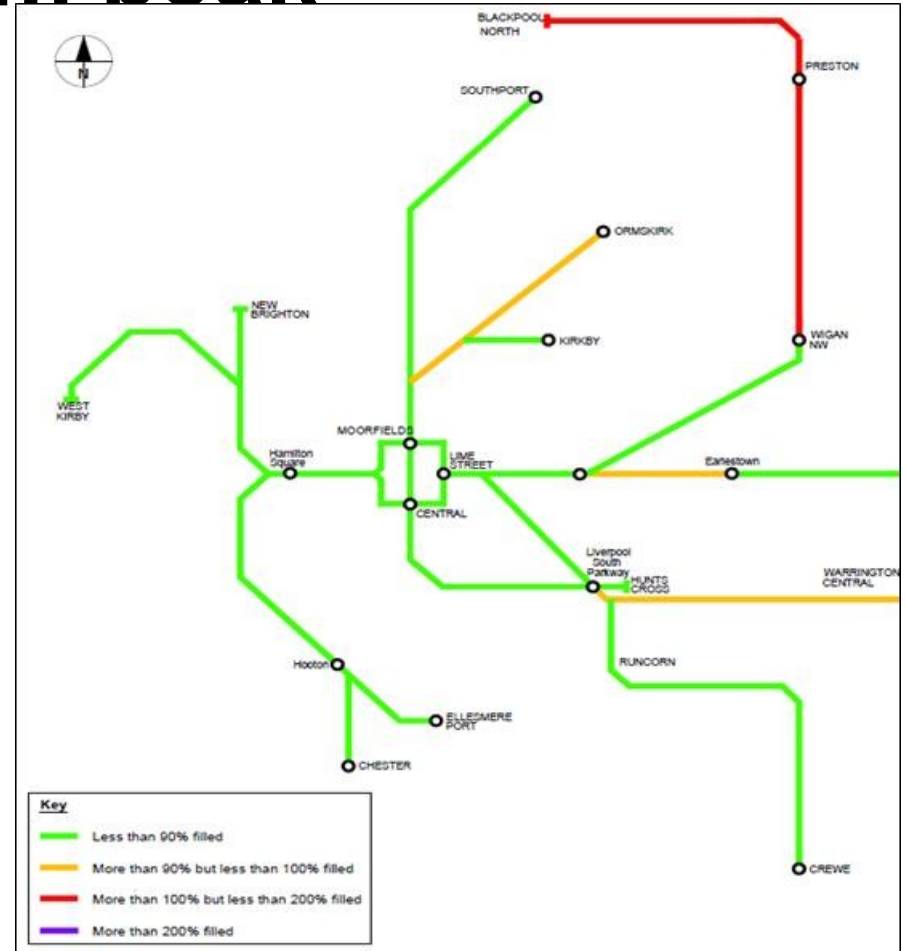
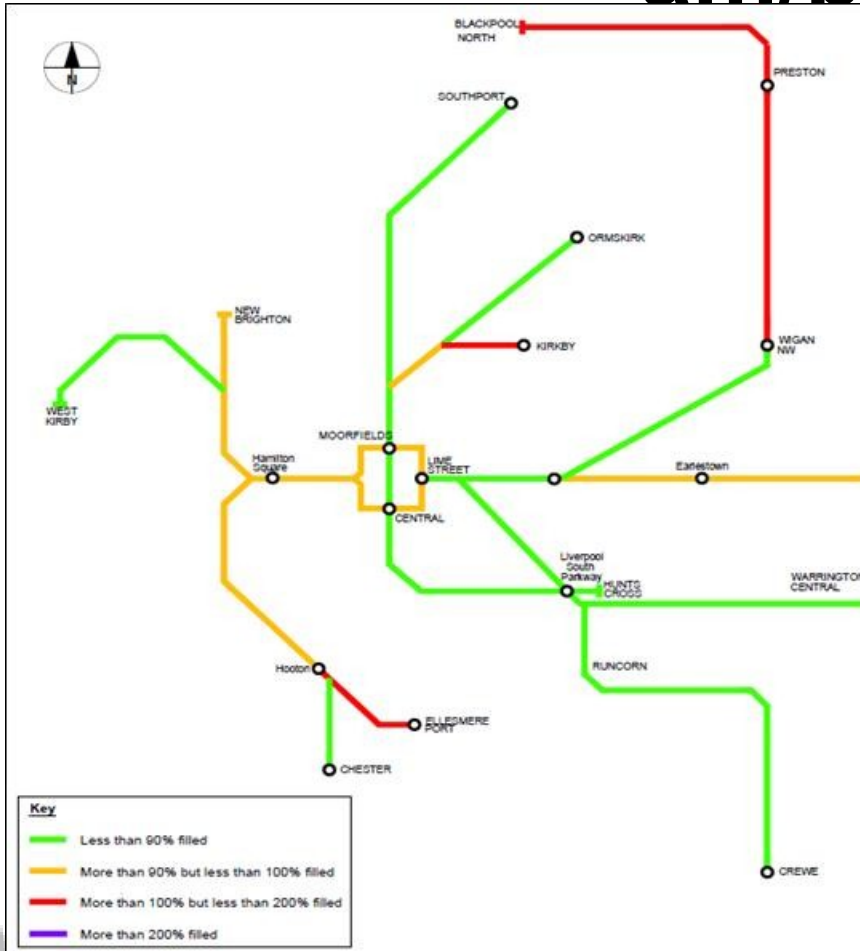


Long Term Rail Strategy – Liverpool City Centre Stations



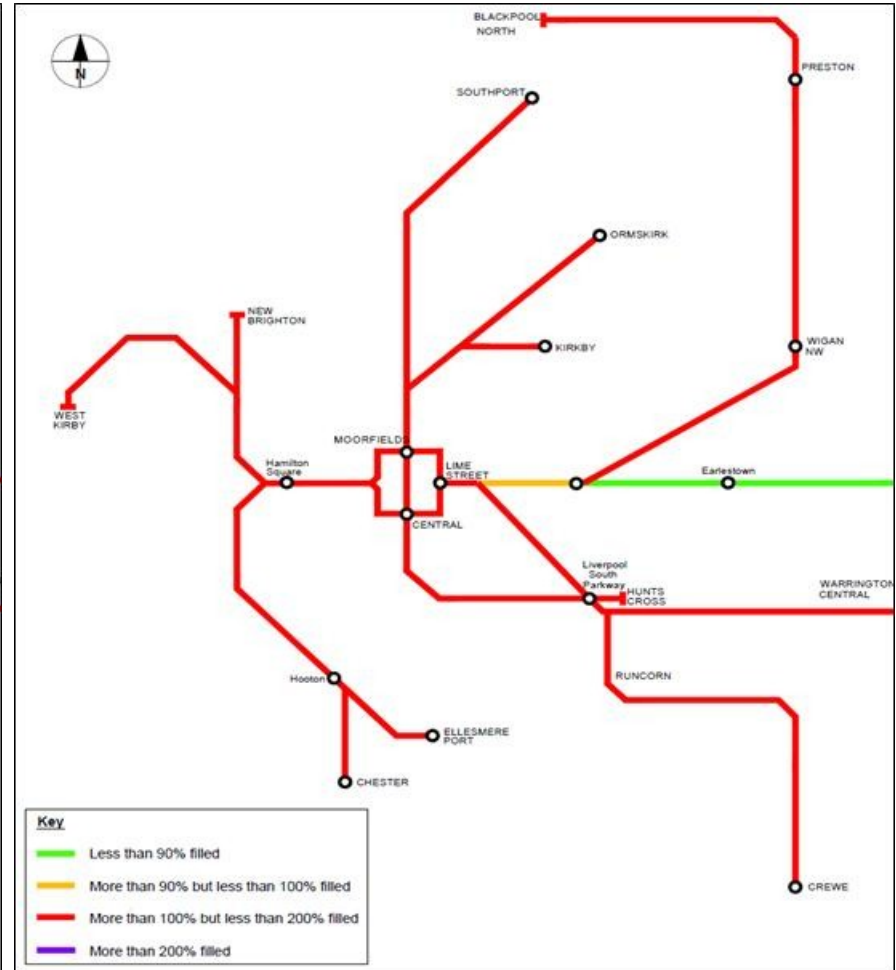
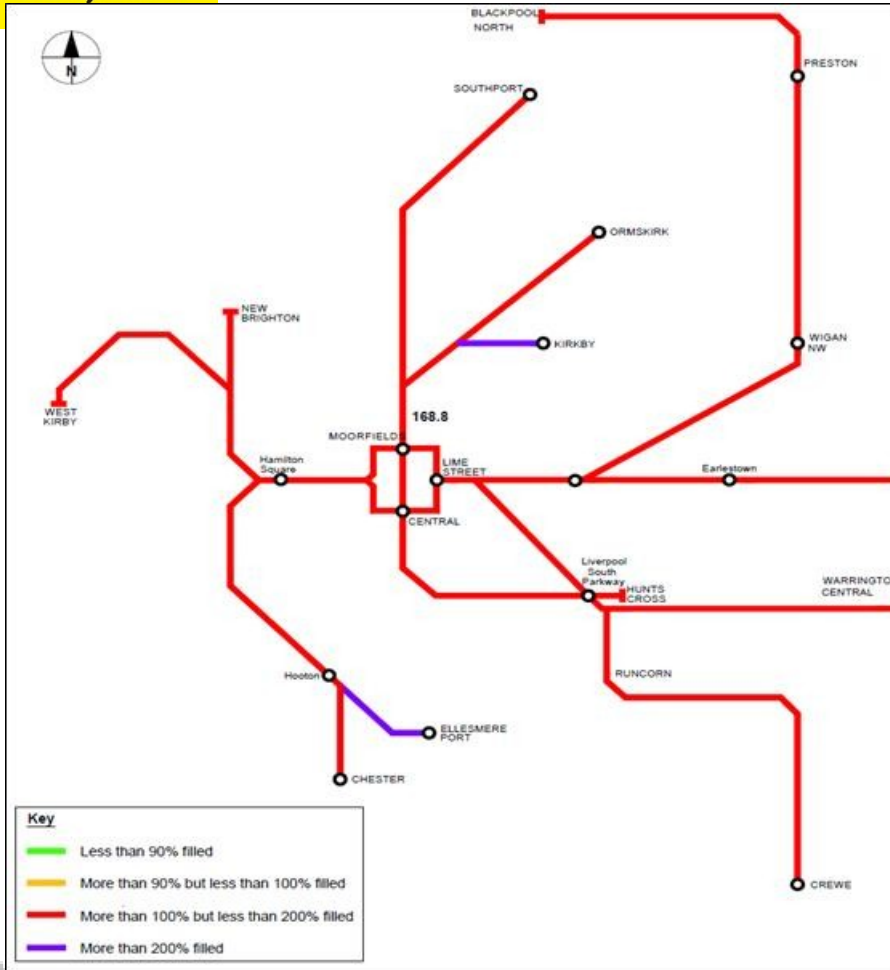


2011 Pressure Diagrams am/pm peak





2043 Pressure Diagrams am/pm peak





Long Term Rail Strategy

To produce a clear set of LCR rail priorities.

Strategy has been developed with aim of ensuring that the rail network meets the needs of the LCR over the next 30 years.

Supports the on-going regeneration of the LCR and thus maximise its potential contribution to the wider UK economy, acting as a catalyst for significant development and growth for the second half of the century.

Strategy provides a clear vision for the rail network and its development. Meets the connectivity needs of the LCR and also aims to inform the future policy development of the LCR.





12 Key Strands

- a) Improving National Passenger and Freight Connections
- b) Enabling Growth on Merseyrail Network
- c) Increasing Capacity in Liverpool City Centre
- d) Improving Connectivity on the City Line
- e) Facilitating a High Quality Service on Cheshire Lines
- f) Connecting via Halton Curve





12 Key Strands (Continued)

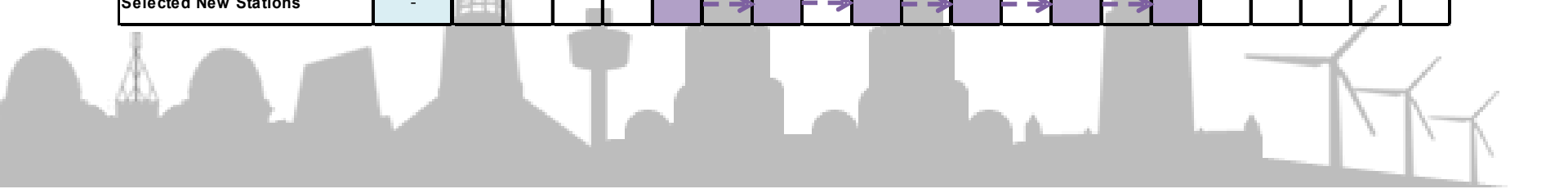
- g) Improving Connections from Chester and Ellesmere Port
- h) Serving New Developments on the Ormskirk- Preston Line
- i) Connecting to Skelmersdale and New Development in Wigan
- j) Enhancing the Borderlands Line
- k) Converting Freight Lines to Passenger Usage
- l) Selected New Stations





Phasing and Priorities

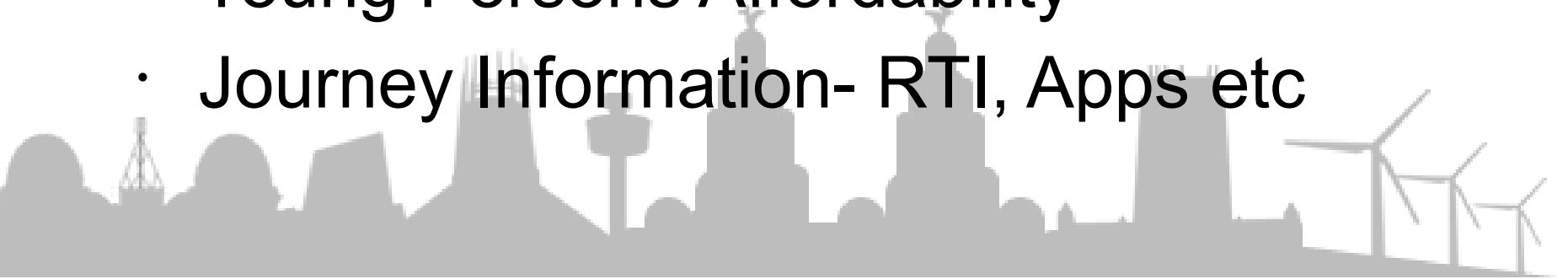
Sub-Package	Priority	CP5: 2014-2019	CP6: 2019-2024	CP7: 2024-2029	CP8: 2029-2034
National Connections	-				
Merseyrail Enabling	1				
Liverpool City Centre Capacity	2				
City Line	3				
Cheshire Lines Committee	4				
Halton Curve	5				
Chester and Ellesmere Port	6				
Ormskirk - Preston	7				
Kirkby - Wigan	8				
Borderlands Line	9				
Conversion of Freight Lines	10				
Selected New Stations	-				





Other Key Developments

- Strategy to be finalised in Autumn
- HS2
- Rail North
- Bus- long term strategy
- Smart Cards
- Young Persons Affordability
- Journey Information- RTI, Apps etc





Questions and Discussion

